



*Dryocosmus kuriphilus*





# Life cycle

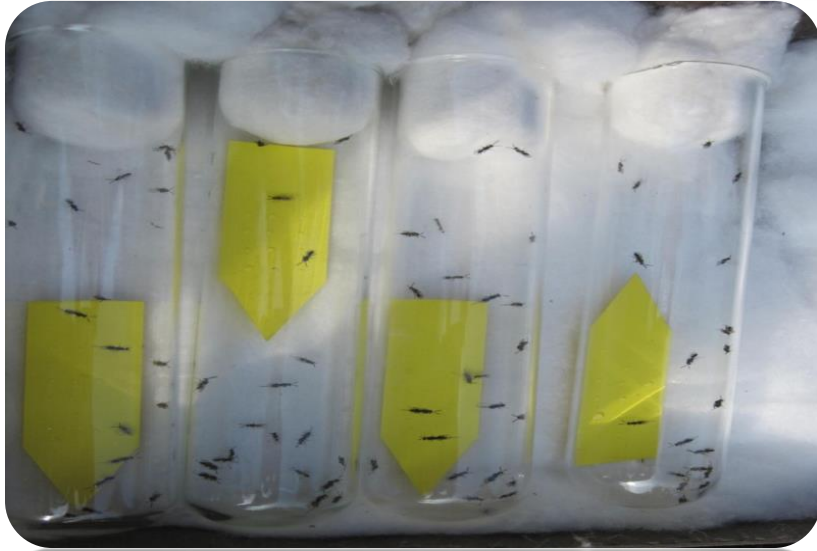




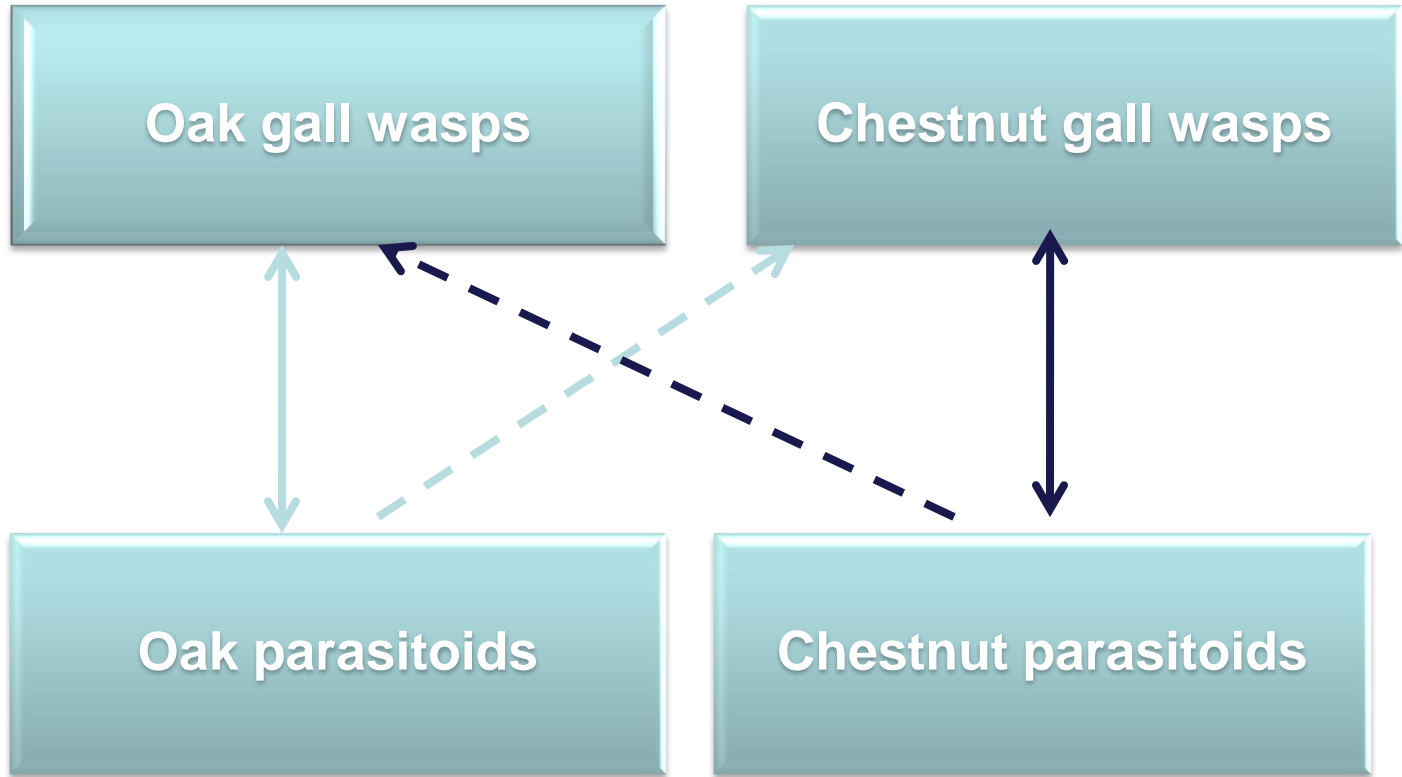
*Damage*



# *Torymus sinensis*



# SYSTEM



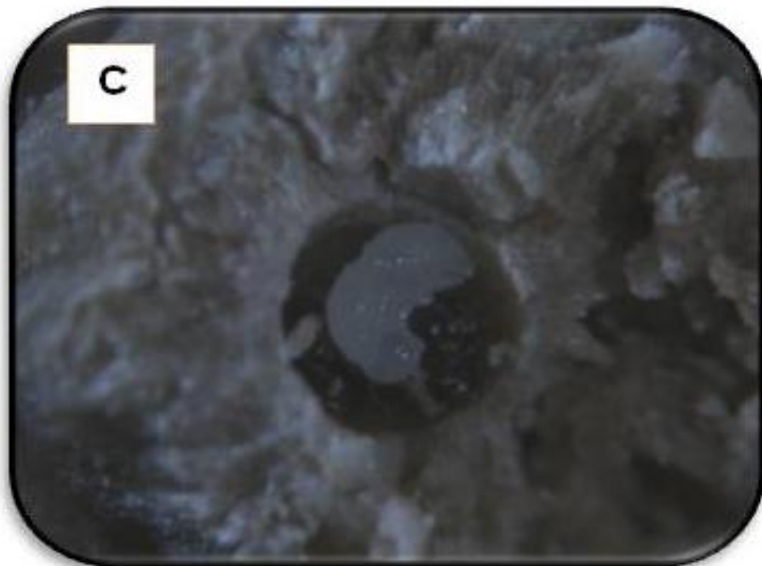
Ecological impact of biological control

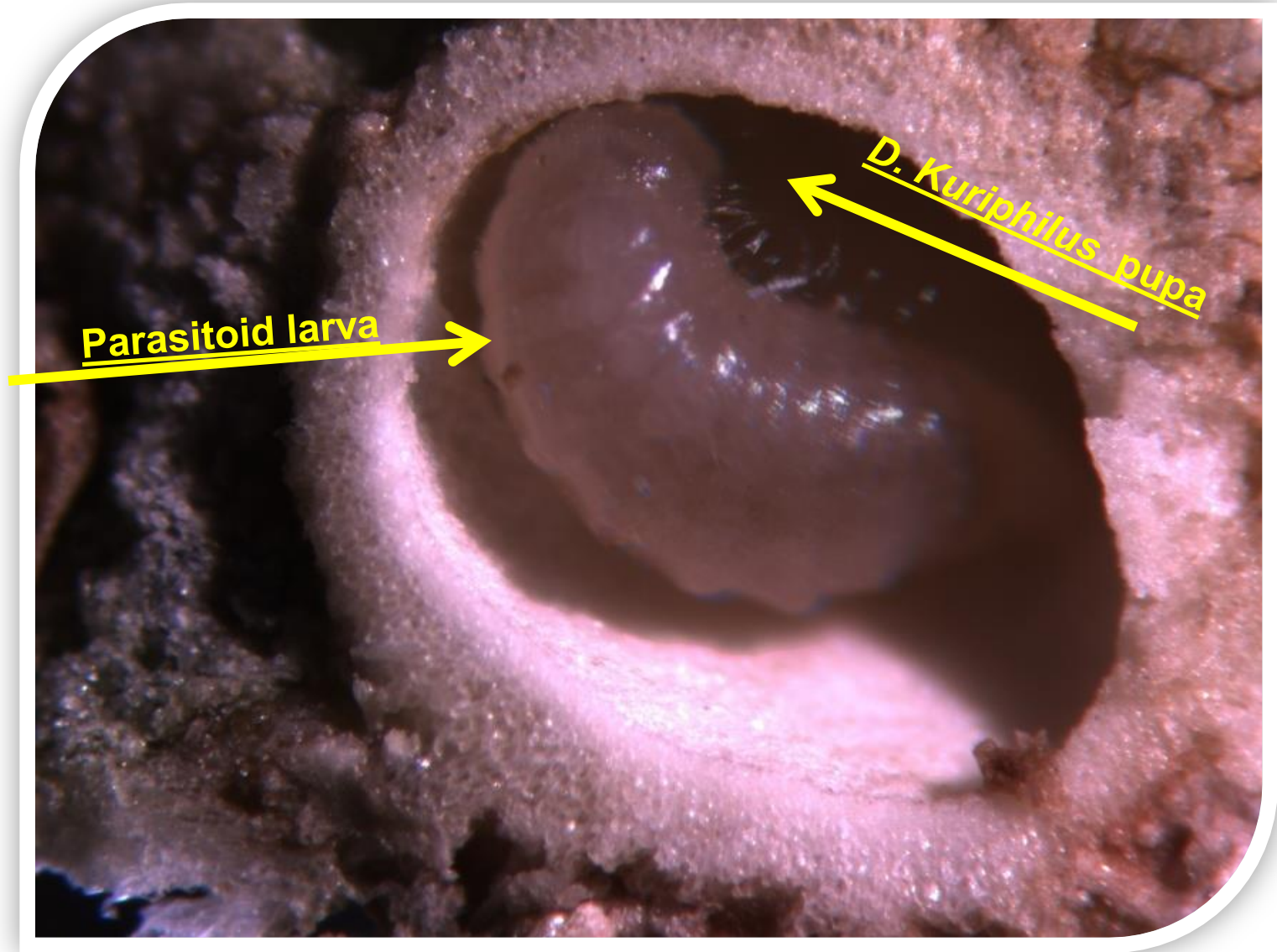


# OAK GALLS



A: Parasitoid larva, B: Parasitoid pupa, C: Parasitoid pupa, D: Parasitoid adult

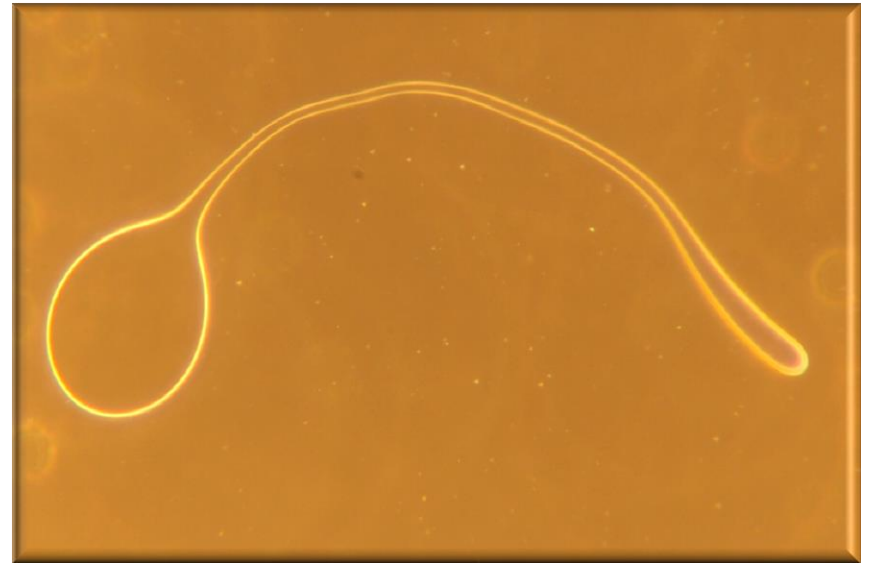
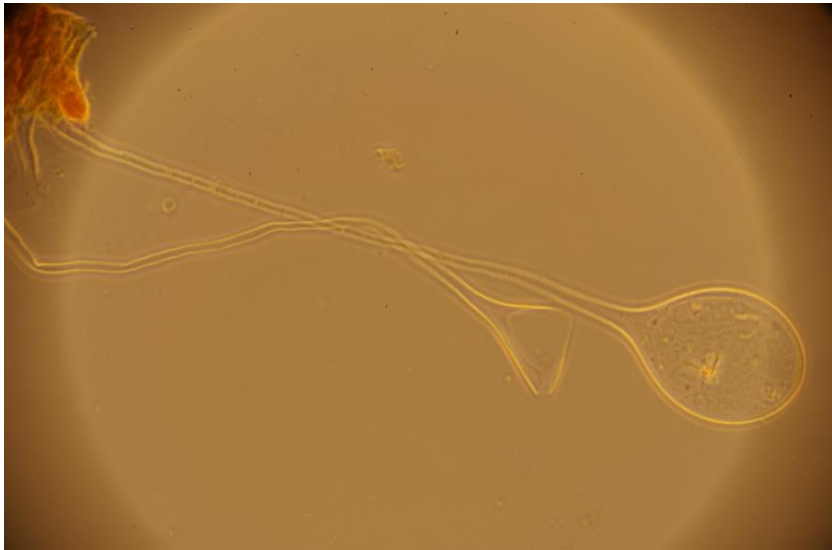
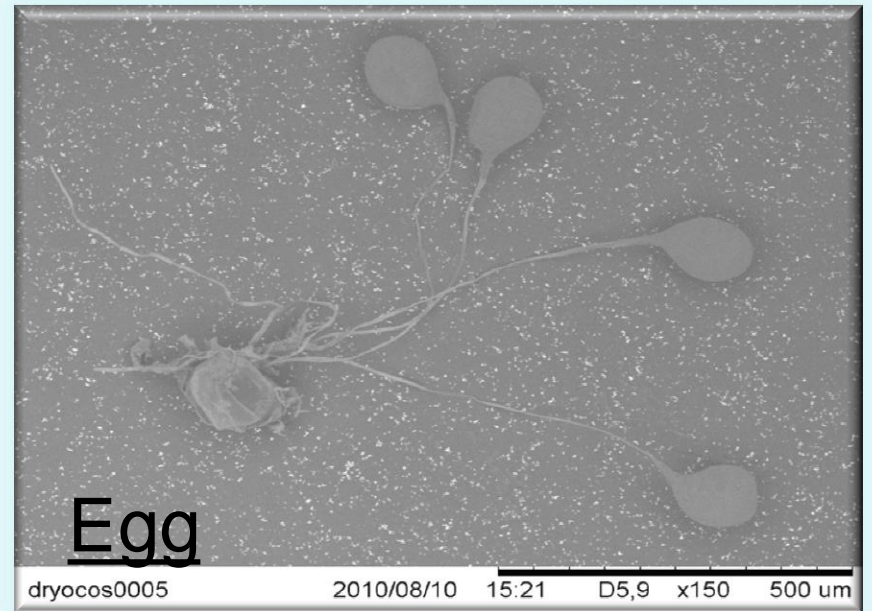




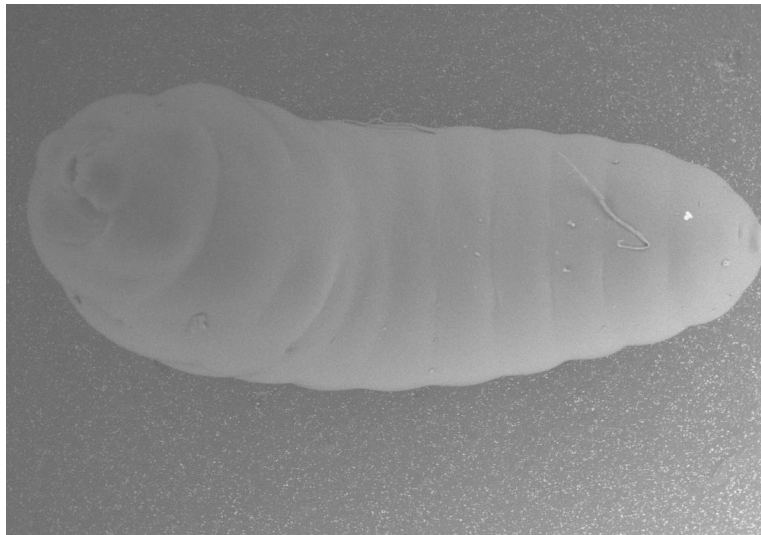
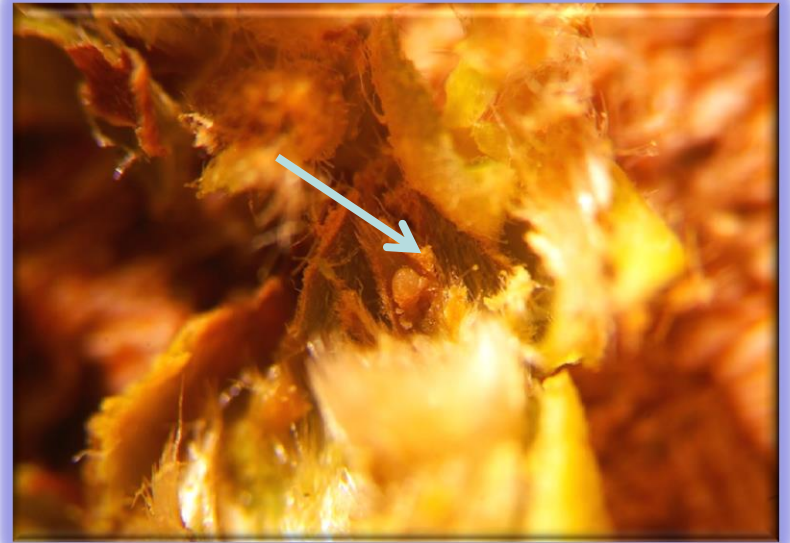
**Parasitoid larva**

***D. Kuriphilus* pupa**

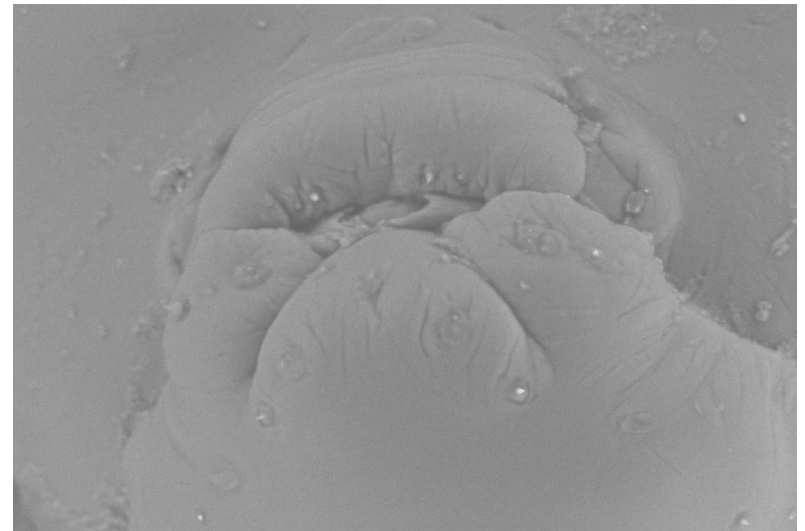




Eggs of *Dryocosmus kuriphilus* inside the bud



dryocosmus0000 2010/05/05 10:30 D3,1 x60 1 mm



dryocosmus0001 2010/05/05 10:33 D1,9 x600 100 um

Larvae of *Dryocosmus kuriphilus* inside the bud